

COVID-19 re-infection by a phylogenetically distinct SARS-coronavirus-2 strain confirmed by whole genome sequencing

Authors: Kelvin Kai-Wang To^{1,2*}, Ivan Fan-Ngai Hung^{3*}, Jonathan Daniel Ip¹, Allen Wing-Ho Chu¹, Wan-Mui Chan¹, Anthony Raymond Tam³, Carol Ho-Yan Fong¹, Shuofeng Yuan¹, Hoi-Wah Tsoi¹, Anthony Chin-Ki Ng¹, Larry Lap-Yip Lee⁴, Polk Wan⁵, Eugene Tso⁶, Wing-Kin To⁷, Dominic Tsang⁸, Kwok-Hung Chan¹, Jian-Dong Huang⁹, Kin-Hang Kok¹, Vincent Chi-Chung Cheng^{1,2}, Kwok-Yung Yuen^{1,2#}

* These authors contribute equally

Author affiliations

¹State Key Laboratory for Emerging Infectious Diseases, Carol Yu Centre for Infection, Department of Microbiology, Li Ka Shing Faculty of Medicine, The University of Hong Kong, Pokfulam, Hong Kong Special Administrative Region, China

²Department of Microbiology, Queen Mary Hospital, Hong Kong Special Administrative Region, China

³Department of Medicine, Queen Mary Hospital, Hong Kong Special Administrative Region, China

⁴ Department of Accident and Emergency Medicine, Tin Shui Wai Hospital, Hong Kong Special Administrative Region, China

⁵ Department of Medicine, North Lantau Hospital, Hong Kong Special Administrative Region, China

⁶ Department of Medicine, United Christian Hospital, Hong Kong SAR, China.

⁷ Department of Pathology, Princess Margaret Hospital, Hong Kong, China

⁸ Centre for Health Protection, Department of Health, Hong Kong

⁹ School of Biomedical Sciences, Li Ka Shing Faculty of Medicine, University of Hong Kong, Hong Kong Special Administrative Region, China

Corresponding authors:

Kwok-Yung Yuen

Email: kyyuen@hku.hk

Phone number: (852)-22552413

Carol Yu Centre for Infection, State Key Laboratory of Emerging Infectious Diseases, Department of Microbiology, Li Ka Shing Faculty of Medicine, The University of Hong Kong, Queen Mary Hospital, Pokfulam, Hong Kong, China

Keywords: COVID-19, SARS-CoV-2, re-infection, whole genome sequencing, D614G

Summary: Our results suggest SARS-CoV-2 may continue to circulate among the human populations despite herd immunity due to natural infection or vaccination. Further studies of patients with re-infection will shed light on protective correlates important for vaccine design.

ABSTRACT

Background

Waning immunity occurs in patients who have recovered from COVID-19. However, it remains unclear whether true re-infection occurs.

Methods

Whole genome sequencing was performed directly on respiratory specimens collected during two episodes of COVID-19 in a patient. Comparative genome analysis was conducted to differentiate re-infection from persistent viral shedding. Laboratory results, including RT-PCR Ct values and serum SARS-CoV-2 IgG, were analyzed.

Results

The second episode of asymptomatic infection occurred 142 days after the first symptomatic episode in an apparently immunocompetent patient. During the second episode, there was serological evidence of elevated C-reactive protein and SARS-CoV-2 IgG seroconversion. Viral genomes from first and second episodes belong to different clades/lineages. Compared to viral genomes in GISAID, the first virus genome has a stop codon at position 64 of orf8 leading to a truncation of 58 amino acids, and was phylogenetically closely related to strains collected in March/April 2020, while the second virus genome was closely related to strains collected in July/August 2020. Another 23 nucleotide and 13 amino acid differences located in 9 different proteins, including positions of B and T cell epitopes, were found between viruses from the first and second episodes.

Conclusions

Epidemiological, clinical, serological and genomic analyses confirmed that the patient had re-infection instead of persistent viral shedding from first infection. Our results suggest SARS-CoV-2 may continue to circulate among the human populations despite herd immunity due to natural infection or vaccination. Further studies of patients with re-infection will shed

light on protective correlates important for vaccine design.

Accepted Manuscript

INTRODUCTION

COVID-19 pandemic has affected over 23 million patients with more than 0.8 million deaths in over 200 countries. The pandemic has severely disrupted the healthcare system and halted socioeconomic activities. Household transmission has led to familial clusters [1,2]. The high transmissibility of the etiological agent SARS coronavirus 2 (SARS-CoV-2) by airborne, droplet and contact routes has led to large outbreaks in eateries, bars, cruise ships, workplaces, and healthcare institutions [3]. With the exception of few regions, COVID-19 continues to circulate worldwide despite stringent control measures. Moreover, many areas experienced resurgence of cases after relaxation of social distancing policies [4].

One of the key questions for COVID-19 is whether true re-infection occurs. Although neutralizing antibody develops rapidly after infection [5,6], recent studies showed that antibody titers start to decline as early as 1-2 months after the acute infection [7,8]. Due to prolonged viral shedding at low levels near the detection limit of RT-PCR assays [5], patients tested negative and discharged from hospitals are often having recurrence of positive results [9]. A case report suggested that re-infection can occur, but viral genome analysis was not performed [10]. These reported cases have raised the controversy between persistent virus shedding and re-infection.

We have encountered a patient with a second episode of infection which occurred 4.5 months after the first episode. Here, we differentiated re-infection from prolonged viral shedding using whole genome analysis to discriminate re-infection from prolonged viral shedding, which was also supported by epidemiological, clinical and serological data.

METHODS

RT-PCR and antibody testing

SARS-CoV-2 RT-PCR was performed using the LightMix® E-gene kit as we described previously [11]. Immunoglobulin G (IgG) against SARS-CoV-2 nucleoprotein was performed using Abbott SARS-CoV-2 IgG assay or microsphere-based antibody as we described previously [12].

Viral whole genome sequencing

RNA was extracted from posterior oropharyngeal saliva using Qiagen Viral RNA Mini Kit as we described previously [4]. Reverse transcription was performed using SuperScript IV reverse transcriptase (ThermoFisher Scientific, Waltham, MA, USA). The cDNA was then used for tiling PCR according to Nanopore protocol - PCR tiling of COVID-19 (Version: PTC_9096_v109_revF_06Feb2020) with modifications [4]. Nanopore sequencing library preparation was prepared according to the PCR tiling of COVID-19 virus protocol for end preparation and native barcode ligation (EXP-NBD196, Oxford Nanopore Technologies). Barcoded and pooled libraries were then ligated to sequencing adapter and sequenced with the Oxford Nanopore MinION device using R9.4.1 flow cell.

Bioinformatics analysis of nanopore sequencing data was performed using the ARTIC-nCoV network workflow [13] with minor modifications for converting raw data into the consensus sequences using the Medaka pipeline. The modifications include increasing the QC passing score from 7 to 10, reducing the minimum length at the guppyplex step to 350 to allow potential deletions to be detected, and increasing the “-normalise” value to 999999 to incorporate all the sequenced reads.

Phylogenetic analysis

Multiple alignment was performed using MAFFT [14]. Maximum-likelihood whole genome phylogenetic tree was constructed using IQ-TREE2 [15], with substitution model TIM2+F as the best predicted model by BIC. The option -czb was used to mask unrelated substructure of the tree with near zero branch length. The ultrafast bootstrap option was used with 1000 replicates. We described the clade information using GISAID [16], Nextstrain [17] and Pangolin [18] nomenclatures. Nucleotide position was numbered according to the reference genome Wuhan-Hu-1 (GenBank accession number MN908947.3).

To identify strains that are most closely related to those of the patient, strains in the GISAID database deposited as of August 20, 2020 were analyzed (Supplementary Table S1). The file downloaded from GISAID (msa_0820) has excluded duplicate and low-quality sequences with >5% NNNs. The following criteria were used for strain inclusion for the phylogenetic analysis. We blast-searched whole viral genome against the GISAID database using the two strains from the patient, and included the 10 top hits for each blast. BLAST+ toolkit was used for the blast searches [19] (Supplementary Table S1). In addition to the 20 chosen strains from the BLAST results, we have also included previously from Hong Kong in our previous publication [4], and 5 most recent strains from UK and Spain and 3 other early reported strains were included in the tree for referencing.

Ethical approval

The study protocol was approved by the Institutional Review Board of the University of Hong Kong/Hospital Authority Hong Kong West Cluster UW 13-265. The patient has also provided written informed consent for publication.

RESULTS

Patient

The patient was a 33-year old male residing in Hong Kong. He enjoyed a good past health. During the first episode, he presented with cough and sputum, sore throat, fever and headache for 3 days. The diagnosis was confirmed by a positive posterior oropharyngeal saliva SARS-CoV-2 RT-PCR on March 26, 2020. He was hospitalized on March 29, 2020. By then, all his symptoms have subsided. The patient was discharged on April 14, 2020 upon two negative SARS-CoV-2 RT-PCR assays on nasopharyngeal and throat swabs taken 24 hours apart.

During the second asymptomatic episode of COVID-19, the patient returned to Hong Kong from Spain via the United Kingdom and was tested positive by SARS-CoV-2 RT-PCR on the posterior oropharyngeal saliva taken for entry screening at the Hong Kong airport on August 15, 2020. He was hospitalized again and remained asymptomatic all along. He was afebrile with a temperature of 36.5 °C. His pulse rate was 86 beats per minute, his blood pressure was 133/94 and his SaO₂ was 98% on room air. Physical examination was unremarkable. Ct value of posterior oropharyngeal saliva was 26.69 upon hospitalization (Figure 1). On admission, C-reactive protein (CRP) level was slightly elevated at 8.6 mg/L, but declined during hospitalization (Figure 1). There was also hypokalemia, but other blood test results were normal (Table 1). Serial chest radiographs did not reveal any abnormalities. No antiviral treatment was given to the patient. Serial real-time RT-PCR Ct values in the posterior oropharyngeal saliva gradually declined during hospitalization, indicating a decrease in viral load (Figure 1).

SARS-CoV-2 IgG

The serum specimens collected 10 days after symptom onset for the first episode and 1 day after hospitalization for the second episode tested negative for IgG against SARS-CoV-2 nucleoprotein. Serial serum specimens collected during the second episode were also tested

for SARS-CoV-2 IgG using Abbott assay, with the serum specimen collected from day 1 to 3 after hospitalization tested negative but a subsequent serum specimen collected on day 5 after hospitalization was tested positive.

Genome analysis

Whole genome sequencing was performed from posterior oropharyngeal saliva specimens collected during the first episode in March and from the second episode in August. The sequenced genomes of both episodes encompass the entire genome, except for 54 bp from the 5' end and 34 bp from the 3' end, excluding the polyA tail. The mean filtered coverage was 2579-fold and 2647-fold for the viral genome from the first infection (hCoV-19/Hong Kong/HKU-200823-001/2020) and that of the second infection (hCoV-19/Hong Kong/HKU-200823-002/2020), respectively.

Genomic analysis showed that the first viral genome belongs to a different clade/lineage from the second viral genome (Figure 2). The first viral genome belongs to GISAID clade V, Nextstrain clade 19A, and Pangolin lineage B.2 with a probability of 0.99. The second viral genome belongs to GISAID clade G, Nextstrain clade 20A, and Pangolin lineage B.1.79 with a probability of 0.70. In addition to the presence of a stop codon at position 64 of orf8 leading to a truncation of 58 amino acids in the virus genome of the first episode of infection, the two virus genomes also differ by another 23 nucleotides, in which 13 were non-synonymous mutations resulting in amino acid changes. The difference in the amino acids between the two genomes are located in the spike protein (at the N-terminal domain, subdomain 2 and upstream helix), membrane protein, nucleoprotein, non-structural proteins (NSP3, NSP5, NSP6, NSP12), and accessory proteins (ORF3a, ORF8 and ORF10) (Figure 3 and Supplementary Table S2).

We have performed a blast search for the first and second genome. The first viral genome is most closely related to strains from the USA or England collected in March and April 2020. The second viral genome is most closely related to strains from Switzerland and England collected in July and August 2020. The second genome contains the mutation nsp6 L142F, which is rarely found (0.009% [7/76828] genomes deposited into GISAID as of August 20, 2020).

DISCUSSIONS

We report the first case of re-infection of COVID-19. Several lines of evidence supported that the second episode is related to re-infection instead of prolonged viral shedding. First, whole genome analysis showed that the SARS-CoV-2 strains from the first and second episode belong to different clades/lineages with 24 nucleotide differences, suggesting that the virus strain detected in the second episode is completely different from the strain found in the first episode. Second, the patient had elevated CRP, relatively high viral load with gradual decline, and seroconversion of SARS-CoV-2 IgG during the second episode, suggesting that this is a genuine episode of acute infection. Third, there was an interval of 142 days between the first and second episode. Previous studies have shown that viral RNA is undetectable one month after symptom onset for most patients [5,20,21]. Prolonged viral shedding for over one month has been reported but rare [21,22]. In one report, a pregnant woman had virus detected for 104 days after her initial positive test [23]. Fourth, the patient has recently traveled to Europe, where resurgence of COVID-19 cases has occurred since late July, 2020. The viral genome obtained during the second episode is phylogenetically closely related to strains collected from Europe in July and August.

The confirmation of re-infection has several important implications. First, it is unlikely that herd immunity can eliminate SARS-CoV-2, although it is possible that

subsequent infections may be milder than the first infection as for this patient. COVID-19 will likely continue to circulate in the human population as in the case of other human coronaviruses. Re-infection is common for “seasonal” coronaviruses 229E, OC43, NL63 and HKU1 [24]. In some instances, re-infection occurs despite a static level of specific antibodies. Second, vaccines may not be able to provide lifelong protection against COVID-19. Furthermore, vaccine studies should also include patients who recovered from COVID-19.

Despite having an acute infection as evidenced by an elevated CRP and seroconversion, the patient was asymptomatic during the second episode. A previous study of re-infection in rhesus macaque also showed a milder illness during the re-infection [25]. This is likely related to the priming of the patient’s adaptive immunity during the first infection. During SARS-CoV-2 infection, neutralizing antibody develops in most patients. In our patient, although anti-SARS-CoV-2 antibody was not detected initially during the second episode, the residual low titer of antibody may have partially controlled the virus. Since neutralizing antibodies target the spike protein [26], variations in the spike protein may render the virus less susceptible to neutralizing antibodies which were induced during the first infection. Several mutations in the spike protein receptor binding domain and N-terminal domain have been shown to confer reduced susceptibility to neutralizing antibodies [27]. For our patient, there are four amino acid residues that differ in the spike protein between the first and second infection, including L18F, A222V, D614G and Q780E. Amino acid residue 222 and 614 are located within the B cell immunodominant epitopes which we have previously identified [28]. A222V and D614G may affect the structure of these epitopes (Supplementary Figure S1). D614G, located at the subdomain 2 of the spike protein, and is now found in most SARS-CoV-2 strains. Studies using pseudovirus suggest that D614G enhances the replication of SARS-CoV-2 [29]. A recent study using pseudovirus showed that 7% of convalescent sera from recovered COVID-19 patients had reduced serum neutralizing activity against 614G

than 614D [30]. Further serological studies are required to determine whether these amino acid differences in the spike protein of the SARS-CoV-2 strains between the first and second infection is responsible for the re-infection.

T cell immunity may also play a role in ameliorating the severity during re-infection. Studies with coronaviruses before the COVID-19 pandemic showed that coronaviruses can induce long-lasting T cell immunity [31]. T cell immunity mainly targets the spike protein, although CD4 or CD8+ T cell response against other viral proteins can be found [31-34]. Grifoni et al showed that both CD4+ T cell mainly targets the structural proteins (spike, membrane and nucleoprotein) [33]. CD4+ T cells also targets the nsp3, nsp4 and ORF8, while the CD8+ T cells target the nsp6, ORF3a and ORF8. T cell immunity can be detected in recovered COVID-19 patients several months after the initial infection [35]. One of the amino acid change was located in the Spike protein amino acid residue 222 which is also a potential site eliciting CD4+ T cell responses [36].

IgG against SARS-CoV-2 was undetectable in the blood collected shortly after the diagnosis during the second episode. The low antibody level may be related to his mild illness during the first episode. We and others have shown that patients with milder disease had lower antibody titers than those with severe disease [6,7].

The lack of antibody response after COVID-19 can have implications on both the susceptibility to re-infection and the severity of infection. Although our patient is asymptomatic during the second infection, it is possible that re-infection may result in more severe infection. Our previous study on SARS-CoV showed that antibodies against the spike protein can be associated with more severe acute lung injury [37]. However, during the second episode of infection in our patient, IgG against SARS-CoV-2 was not detected until 5 days after hospitalization. One possibility is that he did not mount an antibody response after the first infection, but this cannot be ascertained as we only had the archived serum collected

10 days after the onset of symptoms for the first episode. Previous studies have shown that antibody response was not detectable in some patients until 2-3 weeks after onset of symptoms. Another possibility is that he indeed mounted an antibody response after the first infection, but the antibody titer decreases below the detection limit of the assays. This waning of antibody has been well described. In one study, 33% of recovered COVID-19 patients were negative for neutralizing antibodies during the convalescent phase (average 39 days after symptom onset) [8]. Another study showed that 40% of asymptomatic individuals are seronegative within 8 weeks after the onset of symptoms [7]. Besides the lack of protection against re-infection, another implication of rapid decline in antibody titers is that seroprevalence studies may underestimate the true prevalence of infection.

There are several limitations in this study. First, we only have one serum specimen collected for the first episode. Since patients may not mount antibody response within 10 days, the negative antibody test does not exclude the possibility that the patient indeed developed antibody response during the early convalescent phase for the first episode. Second, the virus culture using upper respiratory tract specimens from both episodes are still ongoing, and therefore the neutralizing antibody titer against the virus from the first and second episode cannot be compared.

This case illustrates that re-infection can occur even just after a few months of recovery from the first infection. Our findings suggest that SARS-CoV-2 may persist in humans as is the case for other common-cold associated human coronaviruses, even if patients have acquired immunity via natural infection or via vaccination. In rhesus macaques that have recovered from SARS-CoV-2 infection and re-challenged with the same virus, the peak viral load during re-challenge was $>5 \log_{10}$ lower in the BAL but only $\sim 2 \log_{10}$ lower in the nasal swab when compared with those during the first challenge [25]. Similarly, in vaccine studies, viral RNA could still be detected in the upper respiratory tract for vaccinated

animals [38]. Further studies on re-infection, which will be vital for the research and development of more effective vaccine, are warranted. In summary, reinfection is possible 4.5 months after a first episode of symptomatic infection. Vaccination should also be considered for those with one episode of infection. Even those with previous COVID-19 infection should comply with epidemiological control measures such as universal masking and social distancing.

Accepted Manuscript

ACKNOWLEDGEMENTS

We gratefully acknowledge the originating and submitting laboratories who contributed sequences to GISAID (Supplementary Data).

FUNDING

This study was partly supported by Consultancy Service for Enhancing Laboratory Surveillance of Emerging Infectious Diseases and Research Capability on Antimicrobial Resistance for Department of Health of the HKSAR; the Theme-Based Research Scheme (T11/707/15) of the Research Grants Council, HKSAR; and the donations of Richard Yu and Carol Yu, May Tam Mak Mei Yin, the Shaw Foundation Hong Kong, Michael Seak-Kan Tong, Respiratory Viral Research Foundation Limited, Hui Ming, Hui Hoy and Chow Sin Lan Charity Fund Limited, Chan Yin Chuen Memorial Charitable Foundation, Marina Man-Wai Lee.

CONFLICT OF INTEREST

All authors declare no conflict of interest.

REFERENCES

- [1] Chan JF, Yuan S, Kok KH, To KK, Chu H, Yang J, et al. A familial cluster of pneumonia associated with the 2019 novel coronavirus indicating person-to-person transmission: a study of a family cluster. *Lancet* 2020;10.1016/S0140-6736(20)30154-9
- [2] To KK, Cheng VC, Cai JP, Chan KH, Chen LL, Wong LH, et al. Seroprevalence of SARS-CoV-2 in Hong Kong Special Administrative Region and our returnees evacuated from Hubei province of China: a multi-cohort study. *Lancet Microbe* 2020;DOI:[https://doi.org/10.1016/S2666-5247\(20\)30053-7](https://doi.org/10.1016/S2666-5247(20)30053-7)
- [3] Hung IF, Cheng VC, Li X, Tam AR, Hung DL, Chiu KH, et al. SARS-CoV-2 shedding and seroconversion among passengers quarantined after disembarking a cruise ship: a case series. *Lancet Infect Dis* 2020;10.1016/S1473-3099(20)30364-9
- [4] To KK, Chan WM, Ip JD, Chu AW, Tam AR, Liu R, et al. Unique SARS-CoV-2 clusters causing a large COVID-19 outbreak in Hong Kong. *Clin Infect Dis* 2020;10.1093/cid/ciaa1119
- [5] To KK, Tsang OT, Leung WS, Tam AR, Wu TC, Lung DC, et al. Temporal profiles of viral load in posterior oropharyngeal saliva samples and serum antibody responses during infection by SARS-CoV-2: an observational cohort study. *Lancet Infect Dis* 2020;10.1016/S1473-3099(20)30196-1
- [6] Liu L, To KK, Chan KH, Wong YC, Zhou R, Kwan KY, et al. High neutralizing antibody titer in intensive care unit patients with COVID-19. *Emerg Microbes Infect* 2020;9:1664-70
- [7] Long QX, Tang XJ, Shi QL, Li Q, Deng HJ, Yuan J, et al. Clinical and immunological assessment of asymptomatic SARS-CoV-2 infections. *Nat Med* 2020;26:1200-4

- [8] Robbiani DF, Gaebler C, Muecksch F, Lorenzi JCC, Wang Z, Cho A, et al. Convergent antibody responses to SARS-CoV-2 in convalescent individuals. *Nature* 2020;10.1038/s41586-020-2456-9
- [9] Yuan B, Liu HQ, Yang ZR, Chen YX, Liu ZY, Zhang K, et al. Recurrence of positive SARS-CoV-2 viral RNA in recovered COVID-19 patients during medical isolation observation. *Sci Rep* 2020;10:11887
- [10] Duggan NM, Ludy SM, Shannon BC, Reisner AT, Wilcox SR. A case report of possible novel coronavirus 2019 reinfection. *Am J Emerg Med* 2020;10.1016/j.ajem.2020.06.079
- [11] Yip CC, Sridhar S, Cheng AK, Leung KH, Choi GK, Chen JH, et al. Evaluation of the commercially available LightMix(R) Modular E-gene kit using clinical and proficiency testing specimens for SARS-CoV-2 detection. *J Clin Virol* 2020;129:104476
- [12] Fong CH, Dissanayake TK, Chen LL, Choi CC, Wong LH, Ng AC, et al. Improved detection of antibody against SARS-CoV-2 by microsphere-based antibody assay. *medRxiv* 2020;doi: <https://doi.org/10.1101/2020.05.26.20113191>
- [13] Quick J. Artic Network-nCoV 2019 sequencing protocol. 2020. Available at <https://artic.network/ncov-2019>. Accessed on July 22, 2020. 2020
- [14] Katoh K, Standley DM. MAFFT multiple sequence alignment software version 7: improvements in performance and usability. *Mol Biol Evol* 2013;30:772-80
- [15] Minh BQ, Schmidt HA, Chernomor O, Schrempf D, Woodhams MD, von Haeseler A, et al. IQ-TREE 2: New Models and Efficient Methods for Phylogenetic Inference in the Genomic Era. *Mol Biol Evol* 2020;37:1530-4
- [16] GISAID. Clade and lineage nomenclature aids in genomic epidemiology studies of active hCoV-19 viruses. Available at <https://www.gisaid.org/references/statements->

clarifications/clade-and-lineage-nomenclature-aids-in-genomic-epidemiology-of-active-hcov-19-viruses/. Accessed on July 19, 2020. 2020

[17] Hodcroft EB, Hadfield J, Neher RA, Bedford T. Year-letter Genetic Clade Naming for SARS-CoV-2 on Nextstrain.org. Available at <https://nextstrain.org/blog/2020-06-02-SARSCoV2-clade-naming>. Accessed on July 25, 2020. 2020

[18] Rambaut A, Holmes EC, O'Toole A, Hill V, McCrone JT, Ruis C, et al. A dynamic nomenclature proposal for SARS-CoV-2 lineages to assist genomic epidemiology. *Nat Microbiol* 2020;10.1038/s41564-020-0770-5

[19] Camacho C, Coulouris G, Avagyan V, Ma N, Papadopoulos J, Bealer K, et al. BLAST+: architecture and applications. *BMC Bioinformatics* 2009;10:421

[20] Lee PH, Tay WC, Sutjipto S, Fong SW, Ong SWX, Wei WE, et al. Associations of viral ribonucleic acid (RNA) shedding patterns with clinical illness and immune responses in Severe Acute Respiratory Syndrome Coronavirus 2 (SARS-CoV-2) infection. *Clin Transl Immunology* 2020;9:e1160

[21] Zheng S, Fan J, Yu F, Feng B, Lou B, Zou Q, et al. Viral load dynamics and disease severity in patients infected with SARS-CoV-2 in Zhejiang province, China, January-March 2020: retrospective cohort study. *BMJ* 2020;369:m1443

[22] Hao S, Lian J, Lu Y, Jia H, Hu J, Yu G, et al. Decreased B Cells on Admission Associated With Prolonged Viral RNA Shedding From the Respiratory Tract in Coronavirus Disease 2019: A Case-Control Study. *J Infect Dis* 2020;222:367-71

[23] Molina LP, Chow SK, Nickel A, Love JE. Prolonged Detection of Severe Acute Respiratory Syndrome Coronavirus 2 (SARS-CoV-2) RNA in an Obstetric Patient With Antibody Seroconversion. *Obstet Gynecol* 2020;10.1097/AOG.0000000000004086

- [24] Edridge AW, Kaczorowska J, Hoste AC, Bakker M, Klein M, Jebbink MF, et al. Coronavirus protective immunity is short-lasting. medRxiv preprint 2020:doi:
<https://doi.org/10.1101/2020.05.11.20086439>
- [25] Chandrashekar A, Liu J, Martinot AJ, McMahan K, Mercado NB, Peter L, et al. SARS-CoV-2 infection protects against rechallenge in rhesus macaques. *Science* 2020;369:812-7
- [26] Liu L, Wang P, Nair MS, Yu J, Rapp M, Wang Q, et al. Potent neutralizing antibodies against multiple epitopes on SARS-CoV-2 spike. *Nature* 2020;584:450-6
- [27] Weisblum Y, Schmidt F, Zhang F, DaSilva J, Poston D, Lorenzi JCC, et al. Escape from neutralizing antibodies by SARS-CoV-2 spike protein variants. *bioRxiv* 2020;10.1101/2020.07.21.214759
- [28] Zhang BZ, Hu YF, Chen LL, Yau T, Tong YG, Hu JC, et al. Mining of epitopes on spike protein of SARS-CoV-2 from COVID-19 patients. *Cell Res* 2020;30:702-4
- [29] Li Q, Wu J, Nie J, Zhang L, Hao H, Liu S, et al. The Impact of Mutations in SARS-CoV-2 Spike on Viral Infectivity and Antigenicity. *Cell* 2020;10.1016/j.cell.2020.07.012
- [30] Hu J, He CH, Gao QZ, Zhang GJ, Cao XX, Long QX, et al. The D614G mutation of SARS-CoV-2 spike protein enhances viral infectivity and decreases neutralization sensitivity to individual convalescent sera. *bioRxiv* 2020:doi: <https://doi.org/10.1101/2020.06.20.161323>
- [31] Le Bert N, Tan AT, Kunasegaran K, Tham CYL, Hafezi M, Chia A, et al. SARS-CoV-2-specific T cell immunity in cases of COVID-19 and SARS, and uninfected controls. *Nature* 2020;584:457-62
- [32] Braun J, Loyal L, Frensch M, Wendisch D, Georg P, Kurth F, et al. SARS-CoV-2-reactive T cells in healthy donors and patients with COVID-19. *Nature* 2020;10.1038/s41586-020-2598-9

- [33] Grifoni A, Weiskopf D, Ramirez SI, Mateus J, Dan JM, Moderbacher CR, et al. Targets of T Cell Responses to SARS-CoV-2 Coronavirus in Humans with COVID-19 Disease and Unexposed Individuals. *Cell* 2020;181:1489-501 e15
- [34] Zhou R, To KK, Wong YC, Liu L, Zhou B, Li X, et al. Acute SARS-CoV-2 Infection Impairs Dendritic Cell and T Cell Responses. *Immunity* 2020;10.1016/j.immuni.2020.07.026
- [35] Snyder TM, Gittelman RM, Klinger M, May DH, Osborne EJ, Taniguchi R, et al. Magnitude and Dynamics of the T-Cell Response to SARS-CoV-2 Infection at Both Individual and Population Levels. *medRxiv* 2020;10.1101/2020.07.31.20165647
- [36] Mateus J, Grifoni A, Tarke A, Sidney J, Ramirez SI, Dan JM, et al. Selective and cross-reactive SARS-CoV-2 T cell epitopes in unexposed humans. *Science* 2020;10.1126/science.abd3871
- [37] Liu L, Wei Q, Lin Q, Fang J, Wang H, Kwok H, et al. Anti-spike IgG causes severe acute lung injury by skewing macrophage responses during acute SARS-CoV infection. *JCI Insight* 2019;4
- [38] Mercado NB, Zahn R, Wegmann F, Loos C, Chandrashekar A, Yu J, et al. Single-shot Ad26 vaccine protects against SARS-CoV-2 in rhesus macaques. *Nature* 2020;10.1038/s41586-020-2607-z

FIGURE LEGEND

Figure 1. Serial C-reactive protein level, viral load (Ct value) and SARS-CoV-2 IgG result during the second episode. Anti-SARS-CoV-2 IgG was performed with Abbott SARS-CoV-2 antibody assay.

Figure 2. Phylogenetic analysis of whole SARS-CoV-2 genomes showing the relationship between the two strains of the patient. The tree was constructed by maximum likelihood method. Clade information as inferred by GISAID, Nextstrain and Pangolin nomenclatures, are shown. The reference genome Wuhan-Hu-1 (GenBank accession number NC_045512.2) is used as the root of the tree.

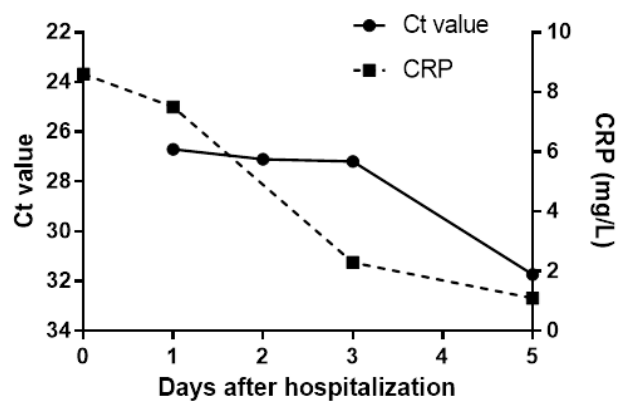
Figure 3. Schematic diagram showing differences in amino acids between the first and second episode. * Stop codon at position 64 of orf8 leading to a truncation of 58 amino acids in the virus genome of the first episode of infection.

Table 1. Blood test results on admission during the second episode

Blood tests (normal range)	Result ^a
WBC ($4.0-9.7 \times 10^9$ cells/L)	6.3
Neutrophil ($1.6-5.1 \times 10^9$ cells/L)	2.8
Lymphocyte ($0.6-4.3 \times 10^9$ cells/L)	2.2
Haemoglobin (13.2-17.2 g/dL)	15.3
Platelet ($150-384 \times 10^9$ cells/L)	226
Sodium (136-146 mmol/L)	138
Potassium (3.4-4.8 mmol/L)	3.2
Urea (2.7-7.6 mmol/L)	4.3
Creatinine (64-104 μ mol/L)	95
Alkaline phosphatase (30-120 U/L)	81
Alanine transferase (<50 U/L)	22
Lactate dehydrogenase (<248 U/L)	179
Creatinine kinase (69-272 U/L)	94
C-reactive protein (<5.0 mg/L)	8.6

^aAbnormal value bolded

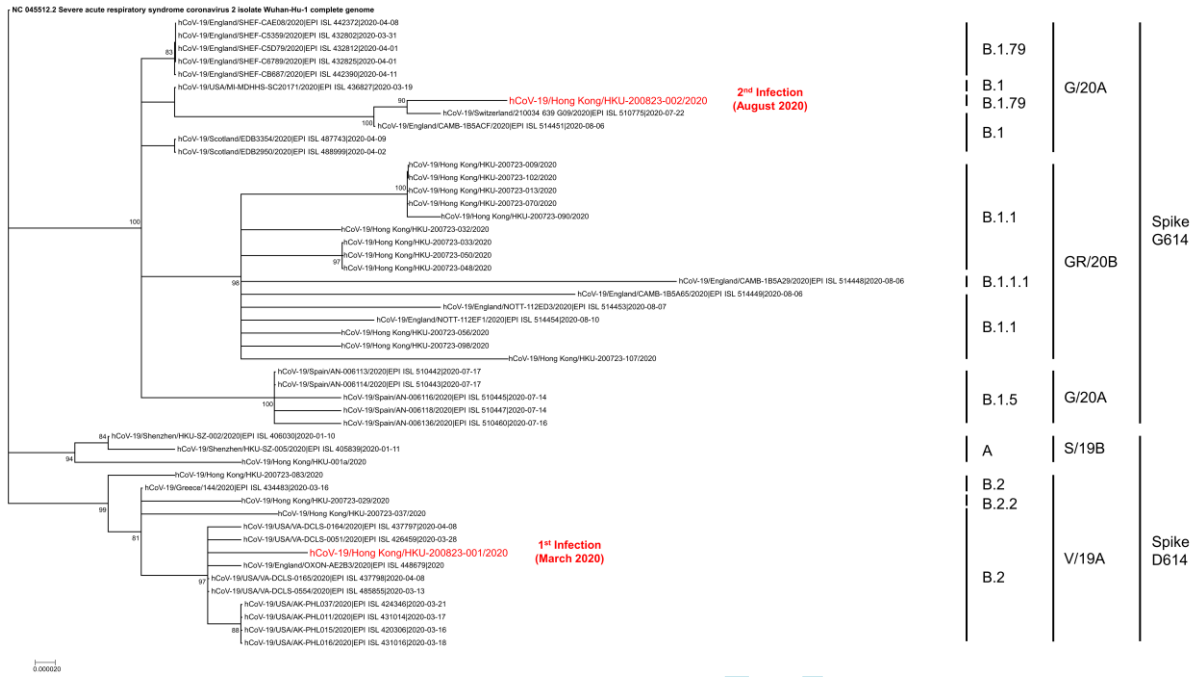
Figure 1



	Days after hospitalization			
	1	2	3	5
SARS-CoV-2 IgG (S/CO)	Negative (0.07)	Negative (0.09)	Negative (0.33)	Positive (4.84)

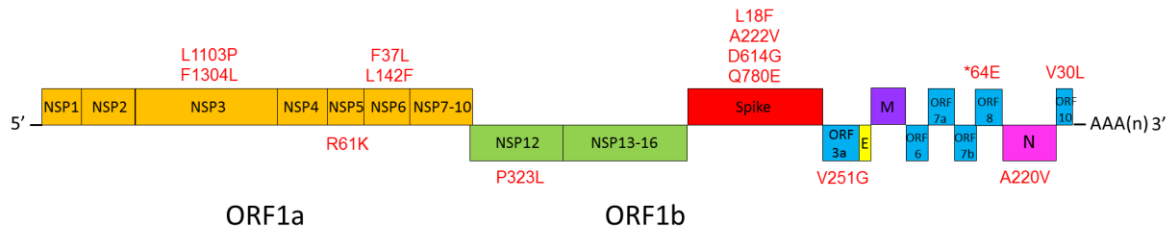
Accepted

Figure 2



Accepted Manuscript

Figure 3



Accepted